

HEAVY DUTY

TRUCKS AND TRAILERS



EXCEL
TRUCK GROUP®

ROOK
MOTOR COMPANY

JUNE 2026

EXCEL

TRUCK GROUP®

ROOK

MOTOR COMPANY

A DIVISION OF EXCEL TRUCK GROUP



•••• 2026 MACK PINNACLE 70" SLEEPER ••••

**MP8 505 HP • 1850 LB-FT
13-SPEED MANUAL (RTLO-18913A) • 249" WB
LOCATED IN ROANOKE, VA**

••• \$178,000 FET Included •••

•••• 2026 FREIGHTLINER 5TH GEN CASCADIAS ••••



**(2) 72" SLEEPERS AVAILABLE
DETROIT DD15 • DT 12 AUTOMATIC TRANSMISSION
12,500# FRONT, 40,000# REAR
(1) IN CHARLOTTE, NC • (1) IN COLUMBIA, SC
••• CALL FOR PRICE •••**

•••• 2026 FREIGHTLINER 114SD QUINT DUMPS ••••



**(2) AVAILABLE!
CUMMINS X12 430 HP • ALLISON 4500RDS AUTO
83,500# GVWR
LOCATED IN CHESAPEAKE, VA
••• \$244,950 •••**



•••• 2026 FREIGHTLINER M2106 26' x 102" BOX TRUCKS ••••

**(2) AVAILABLE
CUMMINS 240 HP • ALLISON 2500HS • 26,000# GVWR
2,500# WALTCO LIFT GATE • ROLL UP REAR DOOR
LOCATED IN CHARLOTTE, NC
••• CALL FOR PRICE •••**



•••• ALL NEW 2026 FIFTH GENERATION CASCADIA ••••



**126" SLEEPER CAB • DD15 455HP ENGINE • DT15 12-SPD TRANSMISSION • PARKSMART
ABAG • ALA2 • ATTENTIVE DRIVER PROTECTION • ENHANCED AERODYNAMICS
REMOTE LOCK/UNLOCK • GEOFENCING & REMOTE PARAMETER UPDATES
DETROIT CONNECT VIDEO CAPTURE 2.0**

•••• LOCATED IN CHESTER, VA ••••

CALL TO SCHEDULE FREE DEMO!



EXCEL

TRUCK GROUP®

ROOK

MOTOR COMPANY

A DIVISION OF EXCEL TRUCK GROUP.

..... 2026 WESTERN STAR 49X QUAD DUMPS



(2) AVAILABLE!
DETROIT DD13 525 HP • ALLISON 450ORDS AUTOMATIC TRANSMISSION
18,180# FRONT, 46,000# REAR, 64,180# GVWR
LOCATED IN CHARLOTTE, NC
... CALL FOR PRICE ...

..... 2026 WESTERN STARS



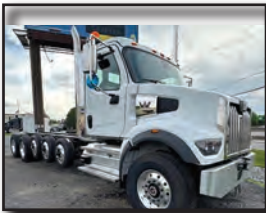
2026 49X DAY CABS
(2) AVAILABLE
TANDEM AXLES
AUTOMATIC TRANSMISSIONS
... STARTING AT \$189,995 ...

2026 49X QUAD DUMP
DETROIT DD13
525 HP
ALLISON 450ORDS AUTO TRANS
... CALL FOR PRICE ...



..... LOCATED IN ALBEMARLE, NC

..... 2026 WESTERN STARS



2026 47X
DAY CAB
CUMMINS X12
ALLISON 400ORDS AUTO TRANS
20K FRONT • 46K REAR
... CALL FOR PRICE ...
LOCATED IN CHARLOTTE, NC

2026 47X
TRI AXLE DUMP
DETROIT DD13 410 HP
DT12 AUTO TRANS
18K FRONT • 46K REAR
... CALL FOR PRICE ...
LOCATED IN COLUMBIA, SC



..... 2026 MACK MD642 26' BOX TRUCKS



(2) AVAILABLE!
CUMMINS B6.7 240HP • ALLISON 2500HS AUTOMATIC TRANSMISSION
26' MICKEY BODY • LIFT GATE • 25,995# GVWR
LOCATED IN CHESTER, VA
... \$118,750 ...

..... BRAND NEW 2025 ISUZU



2025 ISUZU NRR WITH 18' LANDSCAPE BODY
ISUZU 350 HP • ALLISON 1000ORDS-P AUTO TRANS
\$71,500



..... LOCATED IN WEYERS CAVE, VA

EXCEL
TRUCK GROUP®

www.exceltruckgroup.com



8 Sales Locations to Serve You:
Albemarle, NC • Charlotte, NC
Chesapeake, VA • Chester, VA
Columbia, SC • Roanoke, VA
Rock Hill, SC • Weyers Cave, VA

ROOK
MOTOR COMPANY

www.crookmotors.com

Give Us A Call Today! (844) BUY-TRUK or (844) 289-8785

\$119,500

2019 Tri Axle Curtain Side Van



2019 Freightliner 108SD Tri Axle Curtain Side Van w/Universal Forklift Kit, Cummins L9 370 HP, Allison 3000RDS Automatic Transmission, Approx. 112,362 Miles, Air Ride Suspension, 20,000# Front, 40,000# Rear, 13,200# Lift Axle, 68,000# GVWR, Power Steering, A/C, 279" WB, Solid Roof, Wood Floor, (3) Rows E-Track, Interior Lights, Diff Lock, Dual Aluminum Tanks, Stk #1274905.....\$119,500

\$89,500

2018 26' Aluminum Van



2018 Freightliner M2106 26' x 102" Aluminum Van, Cummins L9 270 HP, Allison 3000RDS Automatic Transmission, Approx. 136,324 Miles, Air Ride Suspension, 12,000# Front, 40,000# Rear, 52,000# GVWR, P/S, A/C, 254" WB, (2) Rows E-Track, 5,500# Waltco Rail Gate, Aluminum Roof, Rollup Rear Door, Dual 50 Gallon Aluminum Tanks, Stk #1263472.....\$89,500

\$89,500

2018 24' Aluminum Van



2018 Freightliner M2106 24' x 96" Aluminum Van, Cummins L9 350 HP, Allison 3000RDS Automatic Transmission, Approx. 118,938 Miles, Air Ride Suspension, 12,000# Front, 40,000# Rear, 52,000# GVWR, Power Steering, A/C, 252" WB, 3,500# Maxon Rail Gate, Trans Roof, Aluminum Floor, (5) Rows E-Track, Rollup Rear Door, (2) Aluminum Storage Boxes, 60 Gallon Aluminum Tank, Stk #1271807.....\$89,500

\$79,500

2019 26" Aluminum Van



2019 Freightliner M2106 Extended Cab 24' x 96" Aluminum Van with 3' Attic, Cummins B6.7 240 HP, Allison 2500RDS Automatic Transmission, Approx. 113,375 Miles, Air Ride Suspension, 10,000# Front, 17,500# Rear, 26,000# GVWR, Power Steering, A/C, 289" WB, 4,000# Maxon Tuckaway Lift Gate, (3) Rows E-Track, 12" Rub Rail, Bench Seat, Dual 50 Gallon Aluminum Tanks, Stk #1274902.....\$79,500

EXCEL TRUCK GROUP®

www.exceltruckgroup.com



8 Sales Locations to Serve You:
 Albemarle, NC • Charlotte, NC
 Chesapeake, VA • Chester, VA
 Columbia, SC • Roanoke, VA
 Rock Hill, SC • Weyers Cave, VA



www.crookmotors.com

Give Us A Call Today! (844) BUY-TRUK or (844) 289-8785

\$79,500



**2020
20'
Aluminum
Van**

\$79,500



**2019
26'
Aluminum
Van**

2020 Freightliner M2106 20' x 96" Aluminum Van, Cummins B6.7 325 HP, Allison 3000RDS Automatic Transmission, Approx. 98,138 Miles, Air Ride Suspension, 12,000# Front, 21,000# Rear, 33,000# GVWR, Power Steering, A/C, 226" WB, 3,500# Maxon Rail Gate, 50 Gallon Aluminum Tank, Stk #1271806.....\$79,500

2019 International 4300SBA 26' x 102" Aluminum Van, Cummins ISB6.7 240 HP, Allison 2500RDS Auto Transmission, Approx. 84,389 Miles, Air Ride Susp., 10,000# Front, 19,000# Rear, 25,999# GVWR, P/S, A/C, 272" WB, (3) Rows E-Track, 3,000# Tuckaway Lift Gate, Curbside Door, Collision Avoidance, Wood Floors, Stk #1274911.....\$79,500

\$76,500



**2019
24'
Aluminum
Van**

\$74,500



**2019
26'
Aluminum
Van**

2019 Freightliner M2106 24' x 96" Moving Van w/ 5' Peak, Cummins B6.7 260 HP, Allison 2500RDS Automatic Transmission, Approx. 88,250 Miles, Air Ride Suspension, 10,000# Front, 17,500# Rear, 26,000# GVWR, Power Steering, A/C, 260" WB, 3,000# Maxon Tuckaway Lift Gate, Curbside Door, Wood Floor, Stk #1274904.....\$76,500

2019 Freightliner M2106 26' x 102" Aluminum Van, Cummins B6.7 240 HP, Allison 2500RDS Automatic Transmission, Approx. 135,915 Miles, Air Ride Suspension, 10,000# Front, 17,500# Rear, 26,000# GVWR, Power Steering, A/C, 270" WB, 3,000# Maxon Lift Gate, Curbside Door, Solid Roof, Stk #1274909.....\$74,500

\$74,500



**2019
26'
Aluminum
Van**

\$26,500



**2018
16'
Aluminum
Van**

2019 Freightliner M2106 26' x 102" Aluminum Van, Cummins B6.7 240 HP, Allison 2500RDS Automatic Transmission, Approx. 129,554 Miles, Air Ride Suspension, 10,000# Front, 17,500# Rear, 26,000# GVWR, Power Steering, A/C, 270" WB, 3,000# Maxon Lift Gate, Curbside Door, Stk #1274908.....\$74,500

2018 Isuzu NPR-HP 16' Morgan Aluminum Van, 8.6L V8 Gasoline Engine, Automatic Transmission, Approx. 148,397 Miles, Spring Suspension, 6,630# Front, 11,020# Rear, 14,500# GVWR, Power Steering, A/C, 150" WB, Stk #1271425.....\$26,500

EXCEL TRUCK GROUP®

www.exceltruckgroup.com



8 Sales Locations to Serve You:
 Albemarle, NC • Charlotte, NC
 Chesapeake, VA • Chester, VA
 Columbia, SC • Roanoke, VA
 Rock Hill, SC • Weyers Cave, VA



www.crookmotors.com

Give Us A Call Today! (844) BUY-TRUK or (844) 289-8785

\$89,500

**2019
26'
Reefer
Van**



2019 Western Star 4700SB 26' x 102" Aluminum Reefer Van, Carrier Supra 960 (Electric Standby), Detroit DD13 450 HP, Eaton Fuller Auto Trans., Approx. 255,484 Miles, Air Ride Susp., 16,000# Front, 40,000# Rear, 56,000# GVWR, P/S, A/C, 266" WB, Maxon Tuckaway Lift Gate, Roadside Door, Tri-Fold Rear Doors, Stk #1271423.....\$89,500

\$79,750

**2017
26'
Reefer
Van**



2017 International 4300SBA 26' x 102" Aluminum Reefer Van, Carrier Supra 860 (642 Hours), Cummins ISB 260 HP, Allison 2500RDS Automatic Transmission, Approx. 98,156 Miles, Air Ride Suspension, 10,000# Front, 19,000# Rear, 25,999# GVWR, Power Steering, A/C, 272" WB, Electric Over Hyd. Dock Levelers, Stk #17212.....\$79,750

\$79,500

**2018
16'
Reefer
Van**



2018 Isuzu NPR HD 16' x 96" Aluminum Reefer Van, Carrier Supra 660 Unit (2,333 Hours, Electric Standby), GMC V8, Automatic Transmission, Approx. 56,493 Miles, Spring Susp., 16,000# GVWR, Power Steering, A/C, Kemlite Lined, (2) Rows E-Track, Walco Tuckaway Lift Gate, Flat Aluminum Floor, Stk #1254524.....\$79,500

\$69,750

**2017
18'
Reefer
Van**



2017 Freightliner M2106 18' x 96" Aluminum Reefer Van, Thermo King T-880R Whisper Unit (7,847 Hours), Cummins ISB6.7 240 HP, Allison 2500HS Auto Trans., Approx. 157,472 Miles, Air Ride Susp., 26,000# GVWR, P/S, A/C, Kemlite Lined, (3) Rows E-Track, 3,000# Maxon Tuckaway Lift Gate, Stk #1237706.....\$69,750

\$69,750

**2016
26'
Reefer
Van**



2016 Freightliner M2106 26' x 102" Aluminum Reefer Van, Thermo King T-880R Whisper Unit, Cummins ISL 270 HP, Allison 3000HS Auto Trans., Approx. 101,178 Miles, Air Ride Susp., 52,000# GVWR, P/S, A/C, 270" WB, 5,500# Maxon Rail Gate, (4) Rows Horizontal Log Post, 18" Aluminum Rub Rail, Stk #1239993.....\$69,750

\$59,750

**2018
24'
Reefer
Van**



2018 Freightliner M2106 24' x 102" Aluminum Reefer Van, Carrier Unit (15,133 Hours, 30 Gallon Steel Fuel Tank), Cummins L9 300 HP, Allison 3000HS Auto Trans., Approx. 145,893 Miles, Air Ride Susp., 14,320# Front, 40,000# Rear, P/S, A/C, Flat Non-Skid Floor, Diff Lock, 4,400# Maxon Rail Gate, Stk #1215523.....\$59,750

EXCEL TRUCK GROUP®



MEET THE SALES TEAM

Meet the driving force behind our Used Truck Sales! Based across Virginia and the Carolinas, our Used Truck Sales Team is committed to finding the perfect pre-owned trucks for your fleet. From helping you pick the right vehicle to offering unbeatable customer service, this team always goes the extra mile.



AARON BACKUS
Corporate Used Truck
Sales Manager
(704) 836-6018
abackus@exceltg.com



RICHARD ALMOND
Director of Used
Truck Procurement
(704) 791-3183
ralmond@crookmotors.com



JACK BRUDER
Sales
Chester/Ashland
(540) 656-3711
jbruder@exceltg.com



CHET CHETNEY
Sales
Chesapeake
(757) 840-6360
jchetney@exceltg.com



DYLAN ENGLAND
Sales
Roanoke
(540) 597-7653
dengland@exceltg.com



LEE SAYLOR
Sales
Weyers Cave
(540) 769-9774
lsaylor@exceltg.com



HORACE GRIFFIN
Sales
Albemarle
(704) 985-6161
hgriffin@crookmotors.com



PAYDEN MORRIS
Sales
Albemarle
(704) 985-6828
pmorris@crookmotors.com



STEVEN RIDOLFO
Sales
Rock Hill/Columbia
(803) 833-9283
sridolfo@exceltg.com



KAREN BARBEE
Used Truck
Admin
(704) 982-8188
kbarbee@crookmotors.com



MARLENE MANNING
Finance
Manager
(540) 769-9863
mmanning@exceltg.com



AMIE FOUTZ
Finance
Coordinator
(540) 777-7714
afoutz@exceltg.com



TRACEY ALMOND
Marketing/
Admin
(704) 982-8188
talmond@exceltg.com

EXCEL TRUCK GROUP

www.exceltruckgroup.com



8 Sales Locations to Serve You:
 Albemarle, NC • Charlotte, NC
 Chesapeake, VA • Chester, VA
 Columbia, SC • Roanoke, VA
 Rock Hill, SC • Weyers Cave, VA



www.crookmotors.com

Give Us A Call Today! (844) BUY-TRUK or (844) 289-8785

\$184,500

**2026
Cab
and
Chassis**



2026 Western Star 47X Cab and Chassis, Detroit DD13 410 HP, DT12 Automatic Transmission, Approx. 145 Miles, Air Ride Suspension, 14,320# Front, 40,000# Rear, 54,320# GVWR, Power Steering, A/C, 277" WB, 211" CT, 237" CA, 269" CE, PTO Ready with Dash Switches, Single Frame, Inter Axle Lock, Stk #1240356.....\$184,500

\$184,500

**2026
Cab
and
Chassis**



2026 Western Star 47X Cab and Chassis, Detroit DD13 410 HP, DT12 Automatic Transmission, Approx. 235 Miles, Air Ride Suspension, 14,320# Front, 40,000# Rear, 54,320# GVWR, Power Steering, A/C, 277" WB, 212" CT, 270" EOF, Single Frame, 100 Gallon Aluminum Tank, Stk #1246039.....\$184,500

\$179,500

**2025
Cab
and
Chassis**



2025 Western Star 47X Cab and Chassis, Detroit DD13 410 HP, DT12 Automatic Transmission, Approx. 217 Miles, Air Ride Suspension, 14,320# Front, 40,000# Rear, 54,320# GVWR, Power Steering, A/C, 277" WB, 212" CT, 270" EOF, Single Frame, 100 Gallon Aluminum Tank, Stk #1196709.....\$179,500

\$179,500

**2025
Cab
and
Chassis**



2025 Western Star 47X Cab and Chassis, Detroit DD13 410 HP, DT12 Automatic Transmission, Approx. 113 Miles, Air Ride Suspension, 14,320# Front, 40,000# Rear, 54,320# GVWR, Power Steering, A/C, 277" WB, 211" CT, 237" CA, 269" CE, PTO Ready with Dash Switches, Single Frame, Inter Axle Lock, Stk #1216344.....\$179,500

\$112,500

**2019
Quad Axle
Cab
and
Chassis**



2019 Kenworth T800 Quad Axle Cab and Chassis, Cummins X15 450 HP, Eaton Automatic Transmission, Approx. 342,932 Miles, Air Ride Suspension, 20,000# Front, 46,000# Rear, 20,000# Steerable Lift Axle, Solid Lift Pusher Axle, 76,000# GVWR, Power Steering, A/C, 261" WB, 186" CA, 311" EOF, Locking Rears, Stk #1275996.....\$112,500

\$94,500

**2016
Tri Axle
Cab
and
Chassis**



2016 Freightliner 108SD Tri Axle Cab and Chassis, Cummins ISL 370 HP, Allison 3000RDS Automatic Transmission, Approx. 247,278 Miles, Tuf Trac Suspension, 20,000# Front, 40,000# Rear, 12,350# Steerable Lift Axle, 72,350# GVWR, 279" WB, Power Steering, A/C, Double Frame, 215" CT, Full Locking Rears, Stk #1274910.....\$94,500

EXCEL TRUCK GROUP®

www.exceltruckgroup.com



8 Sales Locations to Serve You:
 Albemarle, NC • Charlotte, NC
 Chesapeake, VA • Chester, VA
 Columbia, SC • Roanoke, VA
 Rock Hill, SC • Weyers Cave, VA



www.crookmotors.com

Give Us A Call Today! (844) BUY-TRUK or (844) 289-8785

\$94,500



**2016
Tri Axle
Cab
and
Chassis**

2016 Freightliner 108SD Tri Axle Cab and Chassis, Cummins ISL 370 HP, Allison 3000RDS Automatic Transmission, Approx. 226,850 Miles, Tuf Trac Suspension, 20,000# Front, 40,000# Rear, 13,200# Steerable Lift Axle, 72,350# GVWR, 279" WB, Power Steering, A/C, Inter Axle Lock, Stk #1274907.....\$94,500

\$79,750



**2019
Cab
and
Chassis**

2019 Freightliner M2112 Cab and Chassis, Detroit DD13 370 HP, Allison 3000RDS Automatic Transmission, Approx. 271,610 Miles, Air Ride Suspension, 14,600# Front, 40,000# Rear, 54,600# GVWR, Aluminum Wheels, 228" WB, Power Steering, A/C, PTO, 165" CA, 270" EOF, Stk #1244982.....\$79,750

\$79,500



**2016
Cab
and
Chassis**

2016 Freightliner M2106 Cab and Chassis, Cummins ISL 350 HP, Allison 3000RDS Automatic Transmission, Approx. 139,435 Miles, Air Ride Suspension, 12,000# Front, 40,000# Rear, 52,000# GVWR, Power Steering, A/C, 252" WB, 60 Gallon Aluminum Tank, Stk #1264605.....\$79,500

\$74,500



**2017
Cab
and
Chassis**

2017 Kenworth T880 Cab and Chassis 40" Flat Top Sleeper, Cummins ISX15 450 HP, Eaton Automatic Transmission, Approx. 395,921 Miles, Air Ride Suspension, 20,000# Front, 40,000# Rear, 60,000# GVWR, Power Steering, A/C, 274" WB, 169" CA, 266" EOF, Locking Front Drive Axle, Double Frame, 105 Gallon Tank, Stk #1272992.....\$74,500

\$59,500

2016 Cab and Chassis



2016 Peterbilt 348 Cab and Chassis, Paccar PX9 330 HP, Allison 3000RDS-P Auto Trans., Approx. 111,780 Miles, Air Ride Suspension, 12,000# Front, 40,000# Rear, 52,000# GVWR, All Aluminum Wheels, Power Steering, A/C, 230" WB, 160" CT, SS Visor, Stk #1258058.....\$59,500

\$49,500

2012 Cab and Chassis



2012 Freightliner M2112 Cab and Chassis, Detroit DD13 410 HP, Eaton Ultrashift Auto Trans., Approx. 240,756 Miles, Air Ride Susp., 14,700# Front, 40,000# Rear, 54,600# GVWR, Aluminum Wheels, 252" WB, P/S, A/C, 186" CA, 80 Gallon Aluminum Tank, Stk #1189565.....\$49,500

\$49,500

2014 Cab and Chassis



2014 Kenworth T370 Cab and Chassis, Paccar PX7 325 HP, Allison 3000RDS Automatic Transmission, Approx. 153,616 Miles, Air Ride Suspension, 12,000# Front, 21,000# Rear, 33,000# GVWR, Steel Wheels, Power Steering, A/C, 218" WB, 150" CA, Stk #1252135.....\$49,500

Crook Motors - C9

EXCEL TRUCK GROUP

www.exceltruckgroup.com



8 Sales Locations to Serve You:
 Albemarle, NC • Charlotte, NC
 Chesapeake, VA • Chester, VA
 Columbia, SC • Roanoke, VA
 Rock Hill, SC • Weyers Cave, VA



www.crookmotors.com

Give Us A Call Today! (844) BUY-TRUK or (844) 289-8785

\$219,500

2024
 17'
 Quad
 Axle
 Dump



2024 Western Star 47X Quad Axle Dump, Detroit DD13 470 HP, Allison 4500RDS Automatic Transmission, Approx. 163,021 Miles, 20,000# Front, 46,000# Rear, (2) 13,500# Steerable Lift Axles, 89,400# GVWR, TufTrac Suspension, Power Steering, A/C, Man Door Front of Body, Heated/Vented Driver Seat, Stk #1273687.....\$219,500

\$209,500 Ea.

(7) 2025
 20-1/2'
 Quint
 Axle
 Dumps



(7) 2025 Western Star 47X 20-1/2' Quint Axle Dumps, Cummins X12 475 HP, Allison 4500RDS Automatic Transmission, Low Miles, 18,000# Front, 46,000# Rear, (3) Lift Axles, Haulmaax or TufTrac Suspension, Aluminum Wheels, Power Steering, A/C, Electric Tarp, Interaxle and Diff Lock, Stk #1190158, 1196240, 1196243, 1190157, 1190159, 1196238, 1196239.....\$209,500 Ea.

\$209,500 Ea.

(12) 2025
 Quad
 Axle
 Dumps



(12) 2025 Western Star 47X Quad Axle Dumps, Cummins X12 475 HP, Allison 4500RDS Automatic Transmission, Low Miles, 18,000# Front, 46,000# Rear, (2) 9,800# Lift Axles, TufTrac Susp., Aluminum Wheels, P/S, A/C, Electric Tarp, Interaxle and Diff Lock, Stk #1203023, 1203022, 1203025, 1203024, 1195788, 1195789, 1195786, 1195787, 1203020, 1203017, 1195790, 1203019.....\$209,500 Ea.

\$199,500

2024
 21'
 Quint
 Axle
 Dump



2024 Western Star 47X 21' Quint Axle Dumps, Cummins X12 475 HP, Allison 4500RDS Automatic Transmission, Low Miles, 18,000# Front, 46,000# Rear, (3) 8,000# Lift Axles, Haulmaax Suspension, Aluminum Wheels, Power Steering, A/C, Electric Tarp, Interaxle and Diff Lock, 64" Sides, Stk #1176563.....\$199,500

\$199,500 Ea.

(4) 2024
 18'
 Quad
 Axle
 Dumps



(4) 2024 Western Star 47X 18' Quad Axle Dumps, Cummins X12 475 HP, Allison 4500RDS Automatic Transmission, Low Miles, 18,000# Front, 46,000# Rear, (2) 9,800# Lift Axles, Haulmaax Susp., Aluminum Wheels, P/S, A/C, Electric Tarp, Interaxle and Diff Lock, 60" Sides, Stk #1183273, 1183274, 1183276, 1183277.....\$199,500 Ea.

\$189,500

2020
 Quad
 Axle
 Dump



2020 Western Star 4700SF Quad Axle Dump, Detroit DD13 505 HP, Allison 4500RDS Automatic Transmission, Approx. 85,318 Miles, 18,000# Front, 46,000# Rear, (2) 11,020# Steerable Lift Axles, Tuf Trac Suspension, P/S, A/C, Asphalt Taper, Double Frame, Electric Tarp, Full Locking Rears, Hi Lift Gate, Stk #1217715.....\$189,500

EXCEL TRUCK GROUP®

www.exceltruckgroup.com



8 Sales Locations to Serve You:
 Albemarle, NC • Charlotte, NC
 Chesapeake, VA • Chester, VA
 Columbia, SC • Roanoke, VA
 Rock Hill, SC • Weyers Cave, VA



www.crookmotors.com

Give Us A Call Today! (844) BUY-TRUK or (844) 289-8785

\$179,500



**2021
15'
Quad
Axle
Dump**

2021 Kenworth T880 15' Quad Axle Dump, Paccar MX13 455 HP, Allison 4700RDS Automatic Transmission, Approx. 256,385 Miles, 18,180# Front, 46,000# Rear, (2) 9,880# Steerable Lift Axles, 83,940# GVWR, Haulmaxx Suspension, P/S, A/C, Electric Tarp, Locking Rear Diff, Stk #1276559.....\$179,500

\$159,500



**2020
Quad
Axle
Dump**

2020 Western Star 4700SF Quad Axle Dump, Detroit DD13 505 HP, Allison 4500RDS Automatic Transmission, Approx. 403,187 Miles, 18,000# Front, 46,000# Rear, (2) 11,020# Steerable Lift Axles, Tuf Trac Suspension, P/S, A/C, Sloped Bulkhead, Asphalt Taper, Electric Tarp, Hi Lift Gate, Aluminum Toolbox, Stk #1226885.....\$159,500

\$159,500



**2019
Quad
Axle
Dump**

2019 Peterbilt 567 Quad Axle Dump, Paccar MX13 455 HP, Allison 4500RDS Automatic Transmission, Approx. 416,564 Miles, 18,740# Front, 46,000# Rear, (2) 13,500# Steerable Lift Axles, Haulmaxx Suspension, Power Steering A/C, Sloped Bulkhead, Electric Tarp, Hi Lift Gate, Asphalt Taper, Stk #1267591.....\$159,500

\$159,500



**2019
17'
Quad
Axle
Dump**

2019 Western Star 4700SF 17' Quad Axle Dump, Detroit DD13 470 HP, Allison 4500RDS Auto Trans., Approx. 391,250 Miles, 18,000# Front, 44,000# Rear, (2) 13,200# Steerable Lift Axles, 70,000# GVWR, Haulmaxx Susp., P/S, A/C, Asphalt Taper, Electric Tarp, SS Visor, Double Frame, Full Locking Rears, Stk #1229821.....\$159,500

\$159,500



**2019
Quad
Axle
Dump**

2019 Peterbilt 567 Quad Axle Dump, Paccar MX13 455 HP, Allison 4500RDS Automatic Transmission, Approx. 430,446 Miles, 18,740# Front, 46,000# Rear, (2) 13,500# Steerable Lift Axles, Haulmaxx Suspension, Power Steering A/C, Sloped Bulkhead, Sloped Sides, Electric Tarp, Hi Lift Gate, Asphalt Taper, Stk #1267118.....\$159,500

\$159,500



**2019
Quad
Axle
Dump**

2019 Peterbilt 567 Quad Axle Dump, Paccar MX13 455 HP, Allison 4500RDS Automatic Transmission, Approx. 454,590 Miles, 18,740# Front, 46,000# Rear, (2) 11,020# Steerable Lift Axles, Haulmaxx Suspension, Power Steering A/C, Sloped Bulkhead, Electric Tarp, Hi Lift Gate, Asphalt Taper, Stk #1267643.....\$159,500

EXCEL TRUCK GROUP®

www.exceltruckgroup.com



8 Sales Locations to Serve You:
 Albemarle, NC • Charlotte, NC
 Chesapeake, VA • Chester, VA
 Columbia, SC • Roanoke, VA
 Rock Hill, SC • Weyers Cave, VA



www.crookmotors.com

Give Us A Call Today! (844) BUY-TRUK or (844) 289-8785

\$159,500

**2019
 Quad
 Axle
 Dump**



2019 Peterbilt 567 Quad Axle Dump, Paccar MX13, Allison 4500RDS Automatic Transmission, Approx. 444,612 Miles, 18,740# Front, 46,000# Rear, (2) 11,020# Steerable Lift Axles, Haulmax Suspension, Power Steering A/C, Sloped Bulkhead, Electric Tarp, Hi Lift Gate, Asphalt Taper, Stk #1265654.....\$159,500

\$154,500

**2018
 Quad
 Axle
 Dump**



2018 Kenworth T880 Quad Axle Dump, Paccar MX13 455 HP, Allison 4500RDS Automatic Transmission, Approx. 478,895 Miles, 20,000# Front, 46,000# Rear, (2) 13,500# Lift Axles, Chalmers Suspension, P/S, A/C, Sloped Bulkhead, Asphalt Taper, Electric Tarp, Hi Lift Gate, Stk #1267116.....\$154,500

\$149,750

**2018
 20'
 Quint
 Axle
 Dump**



2018 Kenworth T880 20' Quint Axle Dump, Paccar MX13 455 HP, Allison 4500RDS Automatic Transmission, Approx. 494,926 Miles, 20,000# Front, 46,000# Rear, (3) 13,500# Lift Axles, Chalmers Suspension, P/S, A/C, Full Locking Rears, Electric Tarp, High Lift Gate, Asphalt Taper, Stk #1245631.....\$149,750

\$129,500

**2015
 20-Yard
 Tri Axle
 Dump**



2015 Freightliner 114SD 20-Yard Tri-Axle Dump, Detroit DD13 450 HP, Allison 4000RDS Auto Trans., Approx. 61,952 Miles, 20,000# Front, 46,000# Rear, (1) Steerable Lift Axle, Walking Beam Susp., P/S A/C, Straight Gate, (3) Grain Chutes, Double Frame, Electric Tarp, Pintle Hitch w/Glad Hands, Stk #1244476.....\$129,500

\$99,500

**2020
 26'
 Flatbed
 Dump**



2020 Freightliner M2106 26' x 102" Morgan Flat Dump, Cummins L9 300 HP, Allison 3000RDS Auto Transmission, Approx. 178,701 Miles, 14,600# Front, 40,000# Rear, 54,600# GVWR, Air Ride Suspension, Steel Wheels, P/S, A/C, Steel Floor, (6) Winches and Straps, Dual 50 Gallon Aluminum Tanks, Stk #1246038.....\$99,500

\$89,500

**2013
 16-1/2'
 Tri Axle
 Dump**



2013 Western Star 4700SF 16-1/2' Tri Axle Dump, Detroit DD13 450 HP, RTO-16908LL Transmission, Approx. 424,841 Miles, 16,000# Front, 40,000# Rear, 13,200# Steerable Lift Axles, Tuf Trac Suspension, Power Steering, A/C, 2-Way Gate, Electric Tarp, Full Locking Rears, Double Frame, Stk #1224837.....\$89,500

EXCEL
TRUCK GROUP®

www.exceltruckgroup.com



8 Sales Locations to Serve You:
Albemarle, NC • Charlotte, NC
Chesapeake, VA • Chester, VA
Columbia, SC • Roanoke, VA
Rock Hill, SC • Weyers Cave, VA



www.crookmotors.com

Give Us A Call Today! (844) BUY-TRUK or (844) 289-8785

\$109,500

2019 Western Star 4700 23-1/2' x 102" Flatbed with Princeton Hookup, Cummins L9 300 HP, Allison 3000RDS Automatic Transmission, Approx. 232,985 Miles, Air Ride Suspension, 14,600# Front, 40,000# Rear, 54,600# GVWR, Power Steering, A/C, (9) Slide Winches, (1) Steel Storage Box, Stk #1242350.....\$109,500



2019
23-1/2'
Flatbed
with
Princeton
Hookup

\$109,500

2018 Freightliner M2106 24' x 102" Steel Flatbed with Moffett Hookup, Cummins L9 300 HP, Allison 3000RDS Automatic Transmission, Approx. 133,710 Miles, Air Ride Suspension, 14,700 Front, 40,000# Rear, P/S, A/C, (8) Winches and Straps, Steel Floor, Dual 50 Gallon Aluminum Tanks, Stk #1240452.....\$109,500



2018
24'
Flatbed
with
Moffett
Hookup

\$89,500

**COMING
SOON!**

2018
25'
Flatbed
with
Moffett
Hookup

2018 Freightliner M2106 25' x 102" Steel Flatbed with Moffett Hookup, Detroit DD8 330 HP, Allison 3000RDS Automatic Transmission, Approx. 114,499 Miles, Air Ride Suspension, 16,000 Front, 40,000# Rear, 56,000# GVWR, P/S, A/C, Steel Floor, (2) Steel Storage Boxes, Full Locking Rears, 100 Gallon Aluminum Tank, 1 Year Warranty on Engine and Aftertreatment, Stk #1082342.....\$89,500

\$69,500



2018
28'
Steel
Flatbed

2018 Freightliner M2106 28' x 102" Steel Flatbed, Cummins L9 350 HP, Allison 3000RDS Automatic Transmission, Approx. 89,405 Miles, 4 Spring Suspension, 14,320 Front, 40,000# Rear, 54,320# GVWR, P/S, A/C, Steel Floor, (1) Steel Storage Boxes, (12) Sliding Winches, Dual 50 Gallon Aluminum Tanks, Stk #1268074.....\$69,500

EXCEL
TRUCK GROUP®

www.exceltruckgroup.com



8 Sales Locations to Serve You:
Albemarle, NC • Charlotte, NC
Chesapeake, VA • Chester, VA
Columbia, SC • Roanoke, VA
Rock Hill, SC • Weyers Cave, VA

ROOK
MOTOR COMPANY

www.crookmotors.com

Give Us A Call Today! (844) BUY-TRUK or (844) 289-8785

\$164,500

2020 Kenworth T880 28' Jerr-Dan Rollback, Cummins X15 450 HP, FAO-16810C 10-Speed Transmission, Approx. 219,176 Miles, 18,740# Front, 40,000# Rear, 58,740# GVWR, Air Ride Suspension, Power Steering, A/C, 20,000# Ramsey Hydraulic Winch, Wood Floor, SS Visor, Double Frame, 100 Gallon Aluminum Tank, Stk #1276544.....\$164,500



2020
28'
Jerr-Dan
Rollback

\$159,500

2020 Freightliner M2106 28' Century Rollback, Cummins L9 350 HP, Allison 3000RDS Automatic Transmission, Approx. 157,344 Miles, 20,000# Front, 40,000# Rear, 60,000# GVWR, Air Ride Suspension, Power Steering, A/C, 267" WB, 30,000# Bed Rating, 20,000# Winch, Wood Floor, Dual 80 Gallon Aluminum Tanks, Stk #1274934.....\$159,500



2020
28'
Century
Rollback

\$159,500

2018 Kenworth T880 28' Jerr-Dan Rollback, Cummins X15 450 HP, FAO-16810C 10-Speed Transmission, Approx. 205,190 Miles, 18,740# Front, 40,000# Rear, 58,740# GVWR, Air Ride Suspension, Power Steering, A/C, 30,000# Bed Rating, Ramsey Winch, Steel Floor, Remote, (2) Storage Boxes, Stk #1274923.....\$159,500



2018
28'
Jerr-Dan
Rollback

EXCEL TRUCK GROUP

www.exceltruckgroup.com



8 Sales Locations to Serve You:
 Albemarle, NC • Charlotte, NC
 Chesapeake, VA • Chester, VA
 Columbia, SC • Roanoke, VA
 Rock Hill, SC • Weyers Cave, VA



www.crookmotors.com

Give Us A Call Today! (844) BUY-TRUK or (844) 289-8785

\$149,500

**2019
 28'
 Century
 Rollback**



2019 Freightliner M2106 28' Century Rollback, Cummins L9 350 HP, Allison 3000RDS Automatic Trans., Approx. 154,726 Miles, 20,000# Front, 40,000# Rear, 60,000# GVWR, Air Ride Suspension, P/S, A/C, 266" WB, 30,000# Bed Rating, 20,000# Winch, Wood Floor, Remote, (2) Storage Boxes, Stk #1276461.....\$149,500

\$124,500



**2019
 28'
 Century
 Rollback**

2019 Freightliner M2106 28' Century Rollback, Cummins L9 350 HP, Allison 3000RDS Automatic Trans., Approx. 232,609 Miles, 20,000# Front, 40,000# Rear, 60,000# GVWR, Air Ride Suspension, P/S, A/C, 266" WB, 30,000# Bed Rating, Winch, Steel Floor, Remote, (2) Storage Boxes, Stk #1080736.....\$124,500

\$124,500



**2018
 28'
 Century
 Rollback**

2018 Peterbilt 348 28' Century Rollback, Paccar PX9 350 HP, Allison 3000RDS Automatic Trans., Approx. 197,733 Miles, 20,000# Front, 40,000# Rear, 60,000# GVWR, Air Ride Suspension, Aluminum Wheels, P/S, A/C, 30,000# Bed Rating, 20,000# Winch, Remote, (2) Storage Boxes, Wood Floor, Double Frame, SS Visor, Stk #1265313.....\$124,500

\$89,500



**2019
 22'
 Century
 Rollback**

2019 Freightliner M2106 22' Aluminum Century Rollback, Cummins B6.7 240 HP, Allison 2100RDS Automatic Trans., Approx. 177,720 Miles, 10,000# Front, 18,000# Rear, 26,000# GVWR, Air Ride Susp., P/S, A/C, 216" WB, 12,000# Bed Rating, Remote Control, 5,000# Ramsey Winch, Stk #1080795.....\$89,500

\$89,500



**2017
 28'
 Ledwell
 Rollback**

2017 Freightliner M2112 28' Ledwell Rollback, Detroit DD13 450 HP, FRO-15210C 10 Speed OD Trans., Approx. 319,833 Miles, 18,000# Front, 40,000# Rear, 58,000# GVWR, Air Ride Susp., P/S, A/C, 262" WB, Wood Floor, Beacon Light, Remote, (1) Storage Box, Stk #1261873.....\$89,500

EXCEL TRUCK GROUP

www.exceltruckgroup.com



8 Sales Locations to Serve You:
 Albemarle, NC • Charlotte, NC
 Chesapeake, VA • Chester, VA
 Columbia, SC • Roanoke, VA
 Rock Hill, SC • Weyers Cave, VA



www.crookmotors.com

Give Us A Call Today! (844) BUY-TRUK or (844) 289-8785

\$149,500

2018 Galbreath Rolloff



2018 Freightliner M2106 Galbreath Rolloff, Cummins L9 350 HP, Allison 3000RDS Automatic Transmission, Approx. 252,665 Miles, 18,000# Front, 44,000# Rear, 62,000# GVWR, Hendrickson Walking Beam Suspension, Power Steering, A/C, 255" WB, Hydraulic Tarp, 80 Gallon Aluminum Tank, Stk #1266005.....\$149,500

\$139,500

2018 24' Flatbed w/ Hiab Boom



2018 Mack GU813 24' Tri Axle Steel Flatbed with Hiab 288EP-4 Boom, Mack MP7 395 HP, MDrive Automatic Transmission, Approx. 326,028 Miles, 20,000# Front, 44,000# Rear, 64,000# GVWR, Camelback Suspension, Power Steering, A/C, 276" WB, Remote, Outriggers, Rear Lift Axle, Double Frame, (1) Aluminum Storage Box, Stk #1268530.....\$139,500

\$149,500

2017 24' Flatbed w/ Palfinger Boom



2017 Freightliner M2106 24' Flatbed with Palfinger PK26002-EHF Boom, Cummins ISL 350 HP, Allison 3000RDS Automatic Transmission, Approx. 118,765 Miles, 20,000# Front, 40,000# Rear, 13,200# Pusher Axle, 68,000# GVWR, Tuf Trac Suspension, Power Steering, A/C, 260" WB, Wood Floor, Locking Rear End, Stk #1263312.....\$149,500

\$119,500

2020 6 Bay Recycling Body



2020 Freightliner M2106 6-Bay Recycling Body with Side Dump, Cummins L9 300 HP, Allison 3500RDS Automatic Transmission, Approx. 17,720 Miles, Spring Suspension, 10,000# Front, 19,000# Rear, 26,000# GVWR, Power Steering, A/C, 252" WB, Stk #1103130.....\$119,500

\$109,500

2020 11' Chipper Body w/ Bucket Boom



2020 Freightliner M2106 11' Chipper Dump with Terex 56' Bucket Boom, Cummins B6.7 220 HP, Allison 2500RDS Automatic Transmission, Approx. 43,524 Miles, Spring Suspension, 10,000# Front, 19,000# Rear, 26,000# GVWR, Power Steering, A/C, Outriggers, Stk #1081378.....\$109,500

\$96,500

2019 12-1/2' Chipper Box Truck



2019 Freightliner M2 12-1/2' Chipper Box Dump with Terex Bucket Boom, Cummins ISB 250 HP, Allison 3500RDS Automatic Trans., Approx. 72,550 Miles, Spring Suspension, 13,300# Front, 21,000# Rear, 33,000# GVWR, Power Steering, A/C, Front Outriggers, Stk #1047050.....\$96,500

\$94,500

2019 28' Ledwell Hydratail



2019 Peterbilt 348 28' x 102" Ledwell Hydratail, Paccar X9 300 HP, Allison 3000RDS Automatic Transmission, Approx. 182,082 Miles, Air Ride Suspension, 20,000# Front, 40,000# Rear, 60,000# GVWR, Power Steering, A/C, Hydraulic Winch, Double Frame, Remote, (2) Steel Storage Boxes, Stk #1274469.....\$94,500

EXCEL TRAILER



MEET THE SALES TEAM

Meet the team behind the trailers that keep businesses moving! Serving customers across Virginia and the Carolinas, the sales team at Excel Trailer is dedicated to helping customers find the right trailer solutions for every operation. Whether you're expanding your fleet, upgrading equipment, or searching for a specialized trailer, our team works hard to match customers with quality options that fit their business needs. With industry knowledge, personalized attention, and a commitment to customer relationships, the Excel Trailer sales team is focused on delivering a buying experience that can't be beat.



ROBERT DYE

Corporate Trailer
Sales Manager
(540) 588-2405
rdye@exceltg.com



ALVIN SHOWALTER

Sales
Weyers Cave
(540) 746-2680
ashowalter@exceltg.com



VICKI CROMER

Sales
Chester
(804) 586-5301
vcromer@exceltg.com



JEREMY CUMBEE

Sales
Roanoke
(540) 240-3910
jcumbee@exceltg.com



RYAN STROUD

Sales
Rock Hill
(803) 833-9205
rstroud@exceltg.com



MARLENE MANNING

Finance
Manager
(540) 769-9863
mmanning@exceltg.com



AMIE FOUTZ

Finance
Coordinator
(540) 777-7714
afoutz@exceltg.com



KRISTIE CLAYTOR

Sales
Coordinator
(540) 777-7700
kclaytor@exceltg.com

EXCEL
TRUCK GROUP®

www.exceltruckgroup.com



8 Sales Locations to Serve You:
Albemarle, NC • Charlotte, NC
Chesapeake, VA • Chester, VA
Columbia, SC • Roanoke, VA
Rock Hill, SC • Weyers Cave, VA

ROOK
MOTOR COMPANY

www.crookmotors.com

Give Us A Call Today! (844) BUY-TRUK or (844) 289-8785

NEW YEAR NEW FLATBED SAVINGS

(3) 2025 Wabash Combo Flatbed Trailers



\$45,900 Ea.

FET Included

(5) 2024 Mac 48' Flatbed Trailers



\$52,500 Ea.

FET Included

(2) 2023 Mac 48' Flatbed Trailers

Air Ride Spread Axle,
Road Warrior Flats, HD
60K Beams,
Hendrickson AAT 25
Suspension, Coil
Package, J Hooks, Outer
Aluminum Wheels,
1 1R22.5 Tires, Reduced
Price with FET



\$49,900 Ea.

(5) 2024 Wabash 48' Flatbed Trailers

Air Ride Spread Axle,
Front Axle Lift,
Galvanized Suspension
Hangers, 1 1R22.5
Tires, Outside
Aluminum Wheels, Coil
Package, Toolbox,
Reduced Price with
FET



\$53,500 Ea.

(2) 2026 Dorsey 36' Forklift Flatbed Trailers



\$49,900 Ea.

FET Included

2025 Dorsey 48' Combo Flatbed

Ultra Light Combo Flats,
All Aluminum Wheels,
Drop Chains,
Coil Package,
Toolbox



\$39,900

EXCEL TRUCK GROUP®

www.exceltruckgroup.com



8 Sales Locations to Serve You:
 Albemarle, NC • Charlotte, NC
 Chesapeake, VA • Chester, VA
 Columbia, SC • Roanoke, VA
 Rock Hill, SC • Weyers Cave, VA



www.crookmotors.com

Give Us A Call Today! (844) BUY-TRUK or (844) 289-8785

\$215,000

**2003
65-Ton
Flat
Deck
Trailer**



2003 Aspen 65-Ton Flat Deck Lowboy Trailer, (Commonly Referred to as a 2+3+2 Setup), Virgin Tires, Outside Aluminum Wheels, New Brake Drums and Shoes, All New Airbags, New Air Tanks, New Air Lines, Re-packed Hydraulics, New Deck, Refurbished Jeep, Lowboy and Booster.....**\$215,000**

\$112,900 Ea.

**NEW
2026
55-Ton
Low Boys**



(3) NEW 2026 Globe 55-Ton 53' x 102'' Lowboy Trailers, Flip Axle Ready, 13 HP Honda Pony Motor, Boom and Bucket Well, (1) Red and (2) Black Finish, FET Included.....**\$112,900 Ea.**

\$93,500

**NEW
2026
75 Yard
Dump
Trailer**



NEW 2026 Globe 75YD Dump Trailer, Spring Suspension, Barn Door Tailgate, Electric Tarp, Stk #1259221.....**\$93,500**

\$89,900

**2023
45'
Walking
Floor
Trailer**



2023 Mac 45' Walking Floor Trailer, HD Keith Steel V Floor, Smooth Side, Air Ride Suspension, Electric Tarp with Plow, Stk #1155464.....**\$89,900**

\$89,500

**NEW
2026
Dump
Trailer**



NEW 2026 Globe GTDD302-30-60YD Dump Trailer, Air Ride Suspension, Steel Floor, Electric Roll Tarp, Roll Up Landing Gear, Stk #1246719.....**\$89,500**

\$59,900 Ea.

**NEW
2027
53'
Flatbed
Trailers**



NEW 2027 Mac 53' Road Warrior Flatbed Trailers, Spread Axle, Air Ride Suspension, Axles Set 60' Forward, (1) Cam Lock Toolbox, J Channel, Coil Package, Stk #1271304, 1271305, 1271307.....**\$59,900 Ea. FET Inc.**

EXCEL TRUCK GROUP

www.exceltruckgroup.com



8 Sales Locations to Serve You:
 Albemarle, NC • Charlotte, NC
 Chesapeake, VA • Chester, VA
 Columbia, SC • Roanoke, VA
 Rock Hill, SC • Weyers Cave, VA



www.crookmotors.com

Give Us A Call Today! (844) BUY-TRUK or (844) 289-8785

\$52,900

**2018
53'
Reefer
Van**



2018 Wabash 53' Reefer Van, Carrier Vector 8500 Unit (3,776 Hours), Aluminum Cross Members, Air Weigh Scales, Air Ride Suspension, Stk #1036373.....\$52,900

\$49,500

**2017
40'
Half Round
Steel Scrap
Dump Trailer**



2017 Mac 40' Half Round Steel Scrap Dump Trailer, Center Point Susp., Electric Mesh Tarps, Stk #1097329.....\$49,500

\$41,900 Ea.

**NEW
2026
Aluminum
Vans**



NEW 2026 Wabash Duraplate High Spec Vans, Air Ride Suspension, Tire Inflation, Skirts, 24K Floor, Lower Rub Rail, Full Duraplate Nose Liner.....\$41,900 Ea. FET Inc.

\$40,900 Ea.

**NEW
2026
53'
Aluminum
Vans**



NEW 2026 Wabash Duraplate HD 53' Vans, Air Ride Suspension, Tire Inflation, 24K Floor, Lower Rub Rail, Full Duraplate Nose Liner.....\$40,900 Ea. FET Inc.

\$39,900

NEW 2026 53' Aluminum Van



NEW 2026 Wabash 53' Duraplate Aluminum Van, Air Ride Susp., Full Height Nose Liner.....\$39,900 FET Inc.

\$35,500

2019 36' Reefer Van



2019 Utility 36' x 102'' Reefer Van, Duct Floor, Side Door, Lift Gate, (2) Rows E-Track, Stk #1253471.....\$35,500

\$34,500

2014 Container Trailer



2014 Landoll Container Trailer, Stk #1267391.....\$34,500

Crook Motors - C20

EXCEL TRUCK GROUP®

www.exceltruckgroup.com



8 Sales Locations to Serve You:
 Albemarle, NC • Charlotte, NC
 Chesapeake, VA • Chester, VA
 Columbia, SC • Roanoke, VA
 Rock Hill, SC • Weyers Cave, VA

ROOK MOTOR COMPANY

www.crookmotors.com

Give Us A Call Today! (844) BUY-TRUK or (844) 289-8785

\$26,900

2019 Combo Flatbed Trailer



2019 Transcraft Combo Steel/
 Aluminum Flatbed Trailer, Stk
 #1268694.....\$26,900

\$26,500

2016 47' Flatbed Trailer w/ Moffett Hookup



2016 Clark 47' Flatbed Trailer w/Moffett Hookup, Steel
 Headboard, (14) Winches/Straps, Stk #1257049...\$26,500

\$26,500

2023 Aluminum Van Trailer



2023 Southwestern Container Chassis, Stk
 #1271565.....\$22,500

\$26,500

2022 38' Flatbed Trailer



2022 Fontaine 48' x 102" Flatbed Trailer,
 Spring Suspension, Slide Tandems, (12) Winches, Stk
 #1274165.....\$26,500

\$24,500

2015 Flatbed Trailer



2015 Clark Flatbed Trailer, Stk #1270448
\$24,500

\$22,500

2023 Container Chassis



2023 Southwestern Container Chassis, Stk
 #1271565.....\$22,500

\$21,900

2016 Aluminum Van Trailer



2016 Wabash Aluminum Paper Spec Van Trailer, Stk
 #1094699.....\$21,900

\$20,500

NEW 2025 Deckover Trailer



NEW 2025 Cam Superline P10CAM8205TE Deck-
 over Trailer, Stk #1253841\$20,500

\$19,900 Ea.

2017 53' Aluminum Vans



2017 Wabash 53' Aluminum Van Trail-
 ers, Spring Suspension, 10" Cross Members, Stk
 #1273226, 1273227, 1273228.....\$19,900 Ea.

EXCEL TRUCK GROUP

www.exceltruckgroup.com



8 Sales Locations to Serve You:
 Albemarle, NC • Charlotte, NC
 Chesapeake, VA • Chester, VA
 Columbia, SC • Roanoke, VA
 Rock Hill, SC • Weyers Cave, VA



www.crookmotors.com

Give Us A Call Today! (844) BUY-TRUK or (844) 289-8785

\$19,500

2018 53' Aluminum Van



2018 Stoughton 53' Aluminum Van, Stk #1273965.....\$19,500

\$19,500

2018 53' Aluminum Van



2018 Hyundai 53' Aluminum Van, Stk #1273964.....\$19,500

\$19,500

2014 Flatbed Trailer



2014 Clark Flatbed Trailer, Stk #1263313.....\$19,500

\$19,500

1990 9,200 Gallon Tanker



1990 Heil 42 x 96" 9,200 Gallon Tanker, Spring Susp., (5) Compartments - 2,500/2,100/1,000/1,500/2,100, Stk #1252512.....\$19,500

\$18,900

NEW 2025 Deckover Trailer



NEW 2025 Cam Superline P10CAM8205TE Deckover Trailer, Stk #1253840\$18,900

\$18,800

NEW 2026 Dump Trailer



NEW 2026 Cam Superline Dump Trailer, Stk #1265061.....\$18,800

\$18,500

2017 53' Aluminum Van



2017 Vanguard Nation 53' Aluminum Van, Stk #1273966.....\$18,500

\$15,900

2015 53' Van Trailer



2015 Wabash 53' x 102" Duraplate Van Trailer, Air Ride Suspension, Aluminum Roof, Vertical Logistics, Swing Door, Stk #1230938.....\$15,900

\$15,500

NEW 2025 Tilt Trailer



NEW 2025 Cam Superline P8CAM174STTXW Tilt Trailer, Stk #1253837.....\$15,500

Crook Motors - C22

EXCEL TRUCK GROUP®

www.exceltruckgroup.com



8 Sales Locations to Serve You:
 Albemarle, NC • Charlotte, NC
 Chesapeake, VA • Chester, VA
 Columbia, SC • Roanoke, VA
 Rock Hill, SC • Weyers Cave, VA

ROOK MOTOR COMPANY

www.crookmotors.com

Give Us A Call Today! (844) BUY-TRUK or (844) 289-8785

\$14,900

NEW 2026 Dump Trailer



NEW 2026 Cam Superline Dump Trailer, Stk #1264911.....\$14,900

\$12,900

NEW 2025 Tilt Trailer



NEW 2025 Cam Superline P7CAM164STTXW Tilt Trailer, Stk #1253830.....\$12,900

\$12,500

2005 48' Aero Slide Tarp Trailer



2005 Great Dane 48' Flatbed Trailer w/Aero Slide Tarp, (12) Winches, (10) Straps, Stk #1217024.....\$12,500

\$11,900

2013 53' Aluminum Van Trailer



2013 Utility 53' Aluminum Van Trailer Stk #1155664.....\$11,900

\$11,500

2012 Duraplate Trailer



2012 Wabash Duraplate Trailer, Air Ride Suspension, Swing Doors, Galvanized Rear Frame, 8 New Virgin Tires, Stk #1049746.....\$11,500

\$10,500

2011 Duraplate Trailer



2011 Wabash Duraplate Trailer, Air Ride Suspension, Swing Door, Aluminum Roof, 8 New Virgin Tires, Stk #1038102.....\$10,500

\$6,900

2008 53' Aluminum Van Trailer



2008 Trailmobile 53' Aluminum Van Trailer, Translucent Roof, Stk #1035694.....\$6,900

\$5,500 As Is

1996 Econoline Trailer



1996 Econoline SP623DE Trailer, Stk #1254035.....\$5,000 As Is

\$4,000 As Is

2016 Flatbed Trailer



2016 Dorsey Flatbed Trailer, Bad Fifth Wheel/Upper Coupler, Stk #1083687.....\$4,000 As Is

WE ARE NOW YOUR
WABASH™

TRAILER DEALER FOR NORTH CAROLINA,
SOUTH CAROLINA, AND VIRGINIA

PARTS | SERVICE | SALES



**BUILT IN
AMERICA**

**BUILT TO
LAST**



EXCEL TRUCK GROUP

www.exceltruckgroup.com



8 Sales Locations to Serve You:
 Albemarle, NC • Charlotte, NC
 Chesapeake, VA • Chester, VA
 Columbia, SC • Roanoke, VA
 Rock Hill, SC • Weyers Cave, VA



www.crookmotors.com

Give Us A Call Today! (844) BUY-TRUK or (844) 289-8785

\$159,500



2020 Peterbilt 567 Tri Axle Day Cab, Cummins ISX15 565 HP, Eaton Automatic Transmission, Approx. 378,173 Miles, Air Ride Suspension, 20,000# Front, 46,000# Rear, 20,000# Steerable Lift Axle, 80,000# GVWR, Power Steering, A/C, 244" WB, Dual Line Wet Kit, Headache Rack, Full Locking Rears, Stk #1274924.....\$159,500

2020 Tri Axle Day Cab

\$159,500



2019 Western Star 4900 Tri Axle Day Cab, Detroit DD16 560 HP, RT-LO-18918B 18-Speed Transmission, Approx. 361,298 Miles, Air Ride Suspension, 14,600# Front, 46,000# Rear, 13,200# Steerable Lift Axle, P/S, A/C, 244" WB, Headache Rack with Light Bar, Dual Line Wet Kit for Lowboy and Dump Trailer, Full Locking Rears, Dual SS Breathers with Light Package, SS Full Round Fenders, Stk #1230039.....\$159,500

2019 Tri Axle Day Cab

\$149,500



2020 Tri Axle Day Cab

\$139,500



2020 Tri Axle Day Cab

2020 Mack Anthem Tri Axle Day Cab, Mack MP8 505 HP, 13 Speed Transmission, Approx. 12,668 Miles, 12,000# Front, 46,000# Rear, 13,000# Drop Axle, 58,000# GVWR, Air Ride Suspension, Power Steering, A/C, Headache Rack, Dual Aluminum Tanks, Stk #1270954.....\$149,500

2020 Peterbilt 567 Tri Axle Day Cab, Paccar MX13 510 HP, 18-Speed Transmission, Approx. 322,703 Miles, Air Ride Suspension, 14,320# Front, 46,000# Rear, 20,280# Fixed Lift Axle, 74,600# GVWR, Power Steering, A/C, 250" WB, Dual Line Wet Kit, Headache Rack, Full Locking Rears, Stk #1268598.....\$139,500

EXCEL TRUCK GROUP

www.exceltruckgroup.com



8 Sales Locations to Serve You:
 Albemarle, NC • Charlotte, NC
 Chesapeake, VA • Chester, VA
 Columbia, SC • Roanoke, VA
 Rock Hill, SC • Weyers Cave, VA



www.crookmotors.com

Give Us A Call Today! (844) BUY-TRUK or (844) 289-8785

\$139,500

2020
Tri
Axle
Day
Cab



2020 Peterbilt 567 Tri Axle Day Cab, Paccar MX13 510 HP, 18-Speed Transmission, Approx. 269,753 Miles, Air Ride Suspension, 14,320# Front, 46,000# Rear, 20,280# Solid Lift Axle, 74,600# GVWR, Power Steering, A/C, 252" WB, Dual Line Wet Kit, Headache Rack, Full Locking Rears, Stk #1274362.....\$139,500

\$99,500

2019
Tandem
Axle
Day
Cab



2019 Kenworth T880 Tandem Axle Day Cab, Paccar MX13 455 HP, FRO-16210C 10-Speed OD Transmission, Approx. 90,013 Miles, Air Ride Suspension, 13,200# Front, 40,000# Rear, 53,200# GVWR, Power Steering, A/C, 184" WB, SS Visor, Dual Aluminum Tanks, Stk #1267605.....\$99,500

\$98,500

2019
Tandem
Axle
Day
Cab



2019 Peterbilt 579 Tandem Axle Day Cab, Cummins X15 450 HP, Automatic Transmission, Approx. 118,009 Miles, Air Ride Suspension, 12,000# Front, 38,000# Rear, 50,000# GVWR, Aluminum Wheels, P/S, A/C, 193" WB, 2-Way Wet Line, Headache Rack with Beacon Light, SS Visor, Air Ride Cab, SS Half Fenders, (2) Step/Storage Boxes, Stk #1270290.....\$98,500

\$98,500

2019
Tandem
Axle
Day
Cab



2019 Peterbilt 579 Tandem Axle Day Cab, Cummins X15 450 HP, Automatic Transmission, Approx. 125,420 Miles, Air Ride Suspension, 12,000# Front, 38,000# Rear, 50,000# GVWR, Aluminum Wheels, Power Steering, A/C, 194" WB, 2-Way Wet Line, Headache Rack with Beacon Light, SS Visor, Air Ride Cab, SS Half Fenders, (1) Aluminum Step/Storage Box, Stk #1266051.....\$98,500

\$96,750

2019
Tandem
Axle
Day
Cab



2019 Kenworth T880 Tandem Axle Day Cab, CUMMINS X15 450 HP, Eaton Automatic Transmission, Approx. 219,831 Miles, Air Ride Suspension, 12,500# Front, 40,000# Rear, 52,500# GVWR, Power Steering, A/C, 176" WB, 2 Way Wet Line (45 Gal. Aluminum Hydraulic Tank), Full Locking Rears, SS half Fenders, SS Visor, Stk #1272570.....\$96,750

\$96,750

2019
Tandem
Axle
Day
Cab



2019 Peterbilt 579 Tandem Axle Day Cab, Cummins X15 450 HP, Automatic Transmission, Approx. 199,569 Miles, Air Ride Suspension, 12,000# Front, 38,000# Rear, 50,000# GVWR, Aluminum Wheels, Power Steering, A/C, 194" WB, 2-Way Wet Line, Headache Rack with Beacon Light, SS Visor, Air Ride Cab, SS Half Fenders, (1) Aluminum Step/Storage Box, Stk #1265649.....\$96,750

EXCEL TRUCK GROUP

www.exceltruckgroup.com



8 Sales Locations to Serve You:
 Albemarle, NC • Charlotte, NC
 Chesapeake, VA • Chester, VA
 Columbia, SC • Roanoke, VA
 Rock Hill, SC • Weyers Cave, VA



www.crookmotors.com

Give Us A Call Today! (844) BUY-TRUK or (844) 289-8785

\$89,500



**2019
Tandem
Axle
Day
Cab**

2019 Freightliner PE116DC Tandem Axle Day Cab, Detroit DD13 470 HP, DT12 Automatic Transmission, Approx. 296,047 Miles, Air Ride Suspension, 12,500# Front, 40,000# Rear, 52,350# GVWR, Power Steering, A/C, 210" WB, Headache Rack, Dual Line Wet Kit, Half Fenders, Dual Aluminum Tanks, Stk #1080659.....\$89,500

\$89,500



**2018
Tandem
Axle
Day
Cab**

2018 Kenworth T880 Tandem Axle Day Cab, Cummins ISX15 450 HP, Eaton Automatic Transmission, Approx. 244,556 Miles, Air Ride Suspension, 12,350# Front, 40,000# Rear, 52,350# GVWR, Power Steering, A/C, 176" WB, Dual Line Wet Kit, SS Fenders, SS Visor, Stk #1270446.....\$89,500

\$89,500



**2018
Tandem
Axle
Day
Cab**

2018 Kenworth T880 Tandem Axle Day Cab, Cummins ISX15 450 HP, Eaton Automatic Transmission, Approx. 224,524 Miles, Air Ride Suspension, 12,350# Front, 40,000# Rear, 52,350# GVWR, Power Steering, A/C, 180" WB, Dual Line Wet Kit, Full Locking Rears, 135 Gallon Aluminum Tank, Stk #1274114.....\$89,500

\$79,500



**2019
Tandem
Axle
Day
Cab**

2019 Freightliner PT1126064ST Tandem Axle Day Cab, Detroit DD15 455 HP, FRO-16210C 10-Speed OD Transmission, Approx. 116,004 Miles, Air Ride Suspension, 12,000# Front, 40,000# Rear, 52,000# GVWR, Power Steering, A/C, 210" WB, Painted Visor, Plastic Half Fenders, Full Locking Rears, 140 Gallon Aluminum Tank, Stk #1263478.....\$79,500

\$79,500



**2022
Tandem
Axle
Day
Cab**

2022 Freightliner PT126 Tandem Axle Day Cab, Detroit DD15 455 HP, DT12 Automatic Transmission, Approx. 220,611 Miles, Air Ride Suspension, 13,300# Front, 40,000# Rear, 53,300# GVWR, Power Steering, A/C, 178" WB, Adaptive Cruise, Stk #1172037.....\$79,500

\$79,500



**2022
Tandem
Axle
Day
Cab**

2022 Freightliner PT126 Tandem Axle Day Cab, Detroit DD15 455 HP, DT12 Automatic Transmission, Approx. 253,519 Miles, Air Ride Suspension, 13,300# Front, 40,000# Rear, 53,300# GVWR, Power Steering, A/C, 178" WB, Adaptive Cruise, Stk #1180994.....\$79,500

EXCEL TRUCK GROUP

www.exceltruckgroup.com



8 Sales Locations to Serve You:
 Albemarle, NC • Charlotte, NC
 Chesapeake, VA • Chester, VA
 Columbia, SC • Roanoke, VA
 Rock Hill, SC • Weyers Cave, VA



www.crookmotors.com

Give Us A Call Today! (844) BUY-TRUK or (844) 289-8785

\$79,500

2022 Tandem Axle Day Cab



2022 Freightliner PT126 Tandem Axle Day Cab, Detroit DD15 455 HP, DT12 Auto Trans, Approx. 174,982 Miles, Air Ride Suspension, 13,300# Front, 40,000# Rear, 53,300# GVWR, Power Steering, A/C, 178" WB, Adaptive Cruise, Stk #1151249.....\$79,500

\$79,500

2019 Tandem Axle Day Cab



2019 Peterbilt 579 Tandem Axle Day Cab, Cummins X15 450 HP, Auto Trans, Approx. 270,780 Miles, Air Ride Susp., 12,000# Front, 38,000# Rear, 50,000# GVWR, Aluminum Wheels, P/S, A/C, 194" WB, 2-Way Wet Line, Headache Rack, Diff Lock, Stk #1276313.....\$79,500

\$79,500

2019 Tandem Axle Day Cab



2019 Freightliner PX1256064ST Tandem Axle Day Cab, Detroit DD13 450 HP, 4000HS Auto Trans, Approx. 262,476 Miles, Air Ride Susp, 12,000# Front, 40,000# Rear, 52,000# GVWR, P/S, A/C, 181" WB, Full Top Fairing, Tank Fairing, Painted Visor, Stk #1271422.....\$79,500

\$74,500

2018 Tandem Axle Day Cab



2018 Freightliner Cascadia 125 Tandem Axle Day Cab, Detroit DD13 410 HP, 10-Speed Transmission, Approx. 496,113 Miles, Air Ride Suspension, 12,000# Front, 40,000# Rear, 52,000# GVWR, Power Steering, A/C, 172" WB, Aluminum Tank, Stk #1170809.....\$74,500

\$69,500

2019 Tandem Axle Day Cab



2019 Peterbilt 567 Tandem Axle Day Cab, Paccar MX13 455 HP, Auto Trans, Approx. 274,889 Miles, Air Ride Suspension, 12,000# Front, 40,000# Rear, 52,000# GVWR, Aluminum Wheels, Power Steering, A/C, 210" WB, Dual Line Wet Kit, Headache Rack, Stk #1268652.....\$69,500

\$62,500

2020 Tandem Axle Day Cab



2020 Freightliner PT126DC Tandem Axle Day Cab, Detroit DD13 410 HP, DT12 Auto Trans, Approx. 211,948 Miles, Air Ride Susp., 12,000# Front, 40,000# Rear, 52,000# GVWR, Aluminum Wheels, Power Steering, A/C, 178" WB, Dual Aluminum Tanks, Stk #1274561.....\$62,500

\$62,500

2020 Tandem Axle Day Cab



2020 Freightliner PT126 Tandem Axle Day Cab, Detroit DD15 455 HP, DT12 Auto Trans, Approx. 243,942 Miles, Air Ride Suspension, 13,300# Front, 40,000# Rear, 53,300# GVWR, Power Steering, A/C, 178" WB, Adaptive Cruise, Stk #1277371.....\$62,500

\$62,500

2020 Tandem Axle Day Cab



2020 Freightliner PT126 Tandem Axle Day Cab, Detroit DD15 455 HP, DT12 Auto Trans, Approx. 188,972 Miles, Air Ride Suspension, 13,300# Front, 40,000# Rear, 53,300# GVWR, Power Steering, A/C, 178" WB, Adaptive Cruise, Stk #1277939.....\$62,500

EXCEL TRUCK GROUP

www.exceltruckgroup.com



8 Sales Locations to Serve You:
 Albemarle, NC • Charlotte, NC
 Chesapeake, VA • Chester, VA
 Columbia, SC • Roanoke, VA
 Rock Hill, SC • Weyers Cave, VA



www.crookmotors.com

Give Us A Call Today! (844) BUY-TRUK or (844) 289-8785

\$59,500

2020 Tandem Axle Day Cab



2020 Freightliner Cascadia 126 Tandem Axle Day Cab, Detroit DD13, DT12 Auto Trans, Approx. 240,969 Miles, Air Ride Susp., 12,000# Front, 40,000# Rear, 52,000# GVWR, Aluminum Wheels, Power Steering, A/C, 178" WB, Inter Axle Lock, Stk #1274563.....\$59,500

\$59,500

2020 Tandem Axle Day Cab



2020 Freightliner PT126 Tandem Axle Day Cab, Detroit DD15 455 HP, DT12 Auto Trans, Approx. 295,748 Miles, Air Ride Suspension, 13,300# Front, 40,000# Rear, 53,300# GVWR, Power Steering, A/C, 178" WB, Adaptive Cruise, Stk #1277372.....\$59,500

\$59,500

2020 Tandem Axle Day Cab



2020 Freightliner PT126 Tandem Axle Day Cab, Detroit DD15 455 HP, DT12 Auto Trans, Approx. 215,058 Miles, Air Ride Suspension, 13,300# Front, 40,000# Rear, 53,300# GVWR, Power Steering, A/C, 178" WB, Adaptive Cruise, Stk #1277374.....\$59,500

\$59,500

2020 Tandem Axle Day Cab



2020 Freightliner PT126 Tandem Axle Day Cab, Detroit DD15 455 HP, DT12 Auto Trans, Approx. 336,847 Miles, Air Ride Suspension, 13,300# Front, 40,000# Rear, 53,300# GVWR, Power Steering, A/C, 178" WB, Adaptive Cruise, Stk #1277370.....\$59,500

\$59,500

2020 Tandem Axle Day Cab



2020 Freightliner PT126064ST Tandem Axle Day Cab, Detroit DD13 470 HP, 10-Speed Trans., Approx. 428,556 Miles, Air Ride Susp., 14,320# Front, 40,000# Rear, 53,220# GVWR, P/S, A/C, 200" WB, Aluminum Headache Rack, Full Locking Rears, Stk #1274564.....\$59,500

\$49,500

2017 Tandem Axle Day Cab



2017 Freightliner PX113064ST Tandem Axle Day Cab, Detroit DD13 450 HP, FRO-15210C 10-Speed Trans, Approx. 366,659 Miles, Air Ride Susp., 12,000# Front, 40,000# Rear, Power Steering, A/C, 185" WB, Dual Line Wet Kit, Headache Rack, Stk #1005528.....\$49,500

\$49,500

2016 Tandem Axle Day Cab



2016 Freightliner PX125064ST Tandem Axle Day Cab, Cummins ISX 450 HP, FRO-15210C 10-Speed Trans, Approx. 304,442 Miles, Air Ride Suspension, 12,000# Front, 40,000# Rear, 52,000# GVWR, Power Steering, A/C, 200" WB, Trac/Diff Lock, Stk #1010079.....\$49,500

\$49,500

2018 Tandem Axle Day Cab



2018 Freightliner PX125064ST Tandem Axle Day Cab, Detroit DD15 505 HP, RTLO-18913A 13-Speed Trans, Approx. 549,749 Miles, Air Ride Suspension, 12,350# Front, 40,000# Rear, 52,350# GVWR, Power Steering, A/C, 196" WB, Bumper Guard, Stk #1273542.....\$49,500

\$39,500

2016 Tandem Axle Day Cab



2016 Freightliner Cascadia 125 Tandem Axle Day Cab, Detroit DD13 450 HP, FRO-15210C 10-Speed Trans, Approx. 532,126 Miles, Air Ride Susp., 12,000# Front, 40,000# Rear, 52,000# GVWR, P/S, A/C, 178" WB, Black Plastic Half Fenders, Stk #1267593.....\$39,500



PARTS DELIVERY

Your time is valuable, and we know downtime is expensive. That's why offer parts delivery straight to your door! Contact us today to get started.



**ORDER YOUR PART ONLINE OR
OVER THE PHONE!**



**HIGH VOLUME & HOT SHOT
DELIVERIES DAILY**

Submit Your Online Parts Request Now
www.exceltruckgroup.com/parts/#requestform

EXCEL TRUCK GROUP®

www.exceltruckgroup.com



8 Sales Locations to Serve You:
 Albemarle, NC • Charlotte, NC
 Chesapeake, VA • Chester, VA
 Columbia, SC • Roanoke, VA
 Rock Hill, SC • Weyers Cave, VA



www.crookmotors.com

Give Us A Call Today! (844) BUY-TRUK or (844) 289-8785

\$259,000

2022 14' Sleeper



2022 Peterbilt 389 Custom 14' Sleeper, Cummins 600 HP, 18-Speed Automatic Transmission, Approx. 225,193 Miles, 14,600# Front, 40,000# Rear, 54,600# GVWR, Air Ride Suspension, 355" WB, P/S, A/C, Engine Power Source Generator, Shower, Toilet, Stove, Sink, Microwave, TV, Refrigerator, Freezer, King Size Bed, Double Frame Rails, Dual 150 Gallon Aluminum Tanks, Stk #1168210.....\$259,000

\$89,500

2021 72" Raised Roof Sleeper



2021 Peterbilt 389 72" Raised Roof Sleeper, (1 Bunk), Paccar MX13 510 HP, 13-Speed Transmission, Approx. 525,656 Miles, 12,500# Front, 38,000# Rear, 50,500# GVWR, Air Ride Suspension, 276" WB, P/S, A/C, Refrigerator, Thermo King TriPac APU, Dual SS Breathers, SS Visor, Full Locking Rears, Full Chrome Gauge Package, PTO, (1) Aluminum Step/Storage Box, Dual Aluminum Tanks, Stk #1258334.....\$89,500

\$199,500

2021 Tri Axle Sleeper



2021 Western Star 4900EX Tri Axle Sleeper, Detroit DD16 600 HP, Eaton Fuller Ultra-shift Transmission, Approx. 266,624 Miles, 20,000# Front, 46,000# Rear, 20,000# Lift Axle, 85,300# GVWR, Air Ride Suspension, 298" WB, P/S, A/C, Dual Line Wet Kit, Headache Rack, Locking Rear Diff., Full Fenders, Wabesto Bunk Heater, Dual 140 Gallon Aluminum Tanks, Stk #1262101.....\$199,500

\$89,500

2019 Studio Sleeper



2019 Kenworth W900L 86" Studio Sleeper, (2) Bunks, Cummins X15 565 HP, RT-LO18918B 18-Speed Transmission, Approx. 591,801 Miles, 13,200# Front, 40,000# Rear, 53,200# GVWR, Air Ride Suspension, 282" WB, P/S, A/C, Carrier APU, Dual Aluminum Tanks, Stk #1263639.....\$89,500

EXCEL TRUCK GROUP®

www.exceltruckgroup.com



8 Sales Locations to Serve You:
 Albemarle, NC • Charlotte, NC
 Chesapeake, VA • Chester, VA
 Columbia, SC • Roanoke, VA
 Rock Hill, SC • Weyers Cave, VA

ROOK MOTOR COMPANY

www.crookmotors.com

Give Us A Call Today! (844) BUY-TRUK or (844) 289-8785

\$84,500

2023 72" Sleeper



2023 Freightliner Cascadia 126 72" Sleeper, (2 Bunks), Detroit DD 15 455 HP, DT12 Automatic Transmission, Approx. 359,814 Miles, 12,500# Front, 40,000# Rear, 52,500# GVWR, Air Ride Suspension, 227" WB, P/S, A/C, Park Smart APU, Espar Bunk Heater, Dual 120 Gallon Aluminum Tanks, Stk #1276322.....\$84,500

\$76,500

2023 72" Sleeper



2023 Freightliner Cascadia 126 72" Sleeper, (2 Bunks), Detroit DD 15 455 HP, DT12 Automatic Transmission, Approx. 476,881 Miles, 12,500# Front, 40,000# Rear, 52,500# GVWR, Air Ride Suspension, 227" WB, P/S, A/C, Park Smart APU, Espar Bunk Heater, Dual 120 Gallon Aluminum Tanks, Stk #1276631.....\$76,500

\$76,500

2023 72" Raised Roof Sleeper



2023 Freightliner Cascadia 126 72" Sleeper, (2 Bunks), Detroit DD 15 455 HP, DT12 Automatic Transmission, Approx. 453,697 Miles, 12,500# Front, 40,000# Rear, 52,500# GVWR, Air Ride Suspension, 227" WB, P/S, A/C, Park Smart APU, Espar Bunk Heater, Dual 120 Gallon Aluminum Tanks, Stk #1276321.....\$76,500

\$75,500

2023 72" Sleeper



2023 Freightliner Cascadia 126 72" Sleeper, (2 Bunks), Detroit DD 15 455 HP, DT12 Automatic Transmission, Approx. 493,799 Miles, 12,500# Front, 40,000# Rear, 52,500# GVWR, Air Ride Suspension, 227" WB, P/S, A/C, Park Smart APU, Espar Bunk Heater, Dual 120 Gallon Aluminum Tanks, Stk #1276320.....\$75,500

EXCEL TRUCK GROUP

www.exceltruckgroup.com



8 Sales Locations to Serve You:
 Albemarle, NC • Charlotte, NC
 Chesapeake, VA • Chester, VA
 Columbia, SC • Roanoke, VA
 Rock Hill, SC • Weyers Cave, VA

ROOK MOTOR COMPANY

www.crookmotors.com

Give Us A Call Today! (844) BUY-TRUK or (844) 289-8785

\$74,500

2023 72" Sleeper



2023 Freightliner Cascadia 126 72" Sleeper, Detroit DD 15 455 HP, DT12 Automatic Transmission, Approx. 484,015 Miles, 12,500# Front, 40,000# Rear, 52,500# GVWR, Air Ride Suspension, 228" WB, P/S, A/C, Park Smart APU, TV Mount, Refrigerator, Interaxle Lock, Aero Package, Dual 120 Gallon Aluminum Tanks, Stk #1274348.....\$74,500

\$72,500

2022 72" Sleeper



2022 Freightliner Cascadia 126 72" Sleeper, Detroit DD 15 455 HP, DT12 Automatic Transmission, Approx. 408,955 Miles, 12,500# Front, 40,000# Rear, 52,500# GVWR, Air Ride Suspension, 227" WB, P/S, A/C, Park Smart APU, Interaxle Lock Dual 120 Gallon Aluminum Tanks, Stk #1274887.....\$72,500

\$66,500

2022 72" Sleeper



2022 Freightliner Cascadia 126 72" Sleeper, Detroit DD 15 455 HP, DT12 Automatic Transmission, Approx. 461,164 Miles, 12,500# Front, 40,000# Rear, 52,500# GVWR, Air Ride Suspension, 228" WB, P/S, A/C, Park Smart APU, Interaxle Lock Dual 120 Gallon Aluminum Tanks, Stk #1274898.....\$66,500

\$34,750

2020 High Rise Sleeper



2020 International LT625 High Rise Sleeper, (2) Bunks, Cummins X15 450 HP, Automatic Transmission, Approx. 459,470 Miles, 12,000# Front, 40,000# Rear, 52,000# GVWR, Air Ride Susp., Power Steering, A/C, PTO, Dual 100 Gallon Aluminum Tanks, Stk #1270432.....\$34,750

EXCEL
TRUCK GROUP®

ROOK
MOTOR COMPANY
A DIVISION OF EXCEL TRUCK GROUP

MOBILE ON-SITE SERVICE



SKIP THE LINE BY BRINGING OUR EXPERTS TO YOU!



ROADSIDE ASSISTANCE

ON-SITE ASSISTANCE

PREVENTATIVE MAINTENANCE

INSPECTIONS AND MORE!

CALL OUR TEAMS FOR SERVICE YOU CAN TRUST

EXCELTRUCKGROUP.COM/MOBILE-SERVICE



FLEET CHOICE

BUILT FOR UPTIME - PRICED FOR SAVINGS



FAILURE RATE LESS THAN 1%



TESTED TO MEET OE SPECS



1 YEAR WARRANTY

EXCELTRUCKGROUP.COM

Crook Motor Company
 PO Box 1060
 Albemarle, NC 28002

PRSR STD
 US Postage
 PAID
 Crook Motor Co.

ELECTRONIC SERVICE REQUESTED

EXCEL
 TRUCK GROUP®

ROOK
 MOTOR COMPANY



Your Destination for Parts, Service & Sales in Virginia and the Carolinas

Albemarle, NC
 1483 Hwy 52 North
 (800) 438-2260



Ashland, VA
 138 Kitty Hamilton Ln
 (866) 422-8782



Charlotte, NC
 4633 Equipment Dr
 (704) 597-1110



Chesapeake, VA
 821 Curtis Saunders Ct
 (757) 424-3000



Chester, VA
 901 W Hundred Rd
 (804) 768-4600



Columbia, SC
 2790 Shop Rd
 (803) 376-4455



Fredericksburg, VA
 3400 Lee Hill Dr
 (888) 230-1514



Lexington, SC
 1828 Two Notch Rd
 (803) 359-0950



Roanoke, VA
 267 Lee Hwy
 (540) 777-7700



Rock Hill, SC
 1170 Porter Rd
 (803) 576-3900



Statesville, NC
 2221 International Dr
 (704) 252-5400



Turbeville, SC
 3908 Clarence Coker Hwy
 (843) 659-3737



Weyers Cave, VA
 3243 Lee Hwy
 (540) 234-0099

